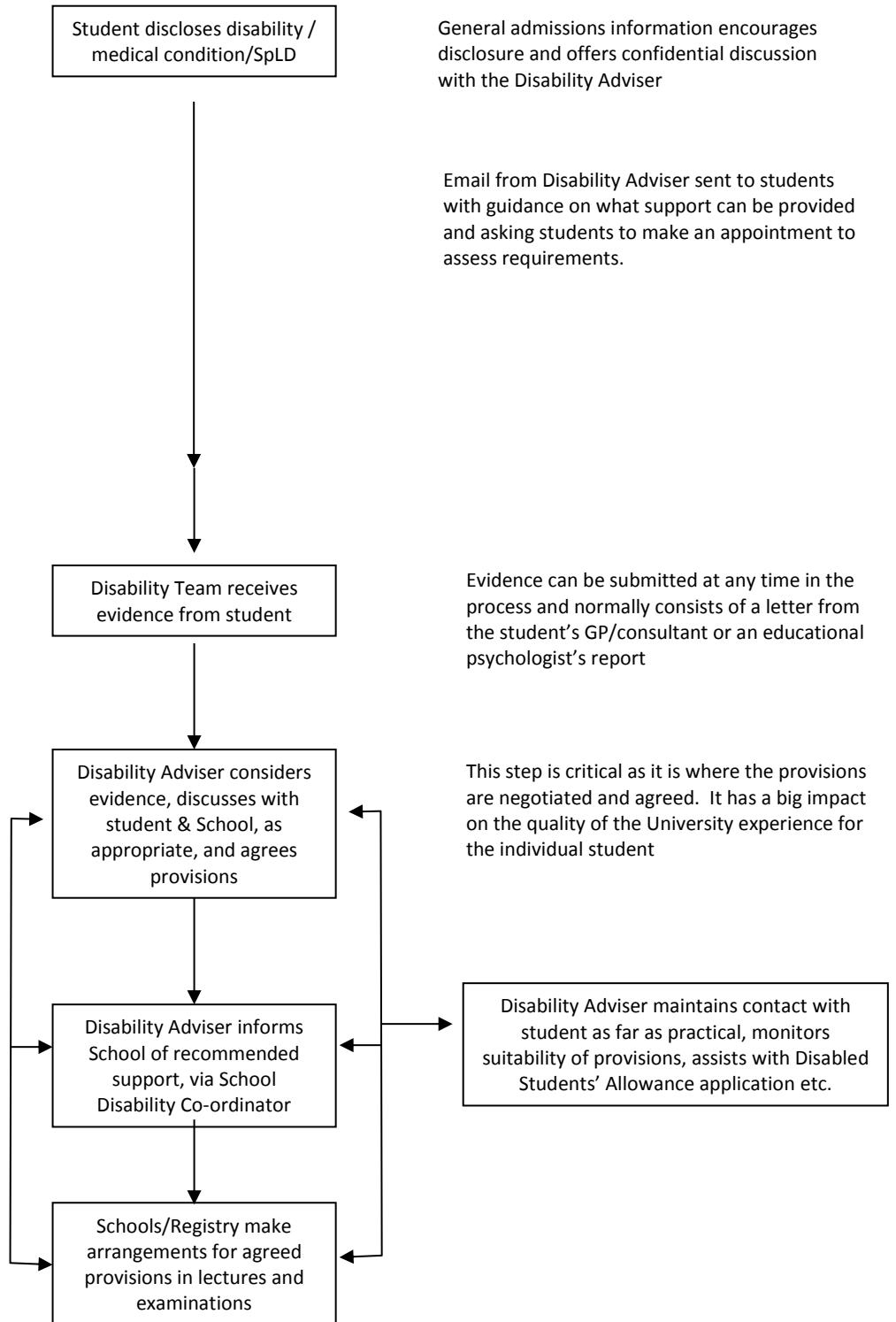


FLOW CHART OF PROCEDURES FOR DISABLED STUDENTS AND THOSE WITH MEDICAL CONDITIONS AND SPECIFIC LEARNING DIFFERENCES (SpLD)



General admissions information encourages disclosure and offers confidential discussion with the Disability Adviser

Email from Disability Adviser sent to students with guidance on what support can be provided and asking students to make an appointment to assess requirements.

Evidence can be submitted at any time in the process and normally consists of a letter from the student's GP/consultant or an educational psychologist's report

This step is critical as it is where the provisions are negotiated and agreed. It has a big impact on the quality of the University experience for the individual student