

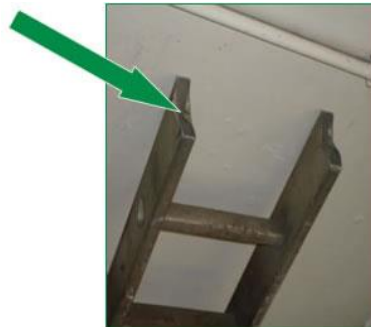
*GN042 - Visual Guidance on Inspecting Ladders and Stepladders*

### Visual Guidance for Inspecting Leaning Ladders

Do not use the ladder if the stiles (uprights) are bent or split as the ladder could collapse



Do not use if the feet are missing, worn or damaged as the ladder could slip

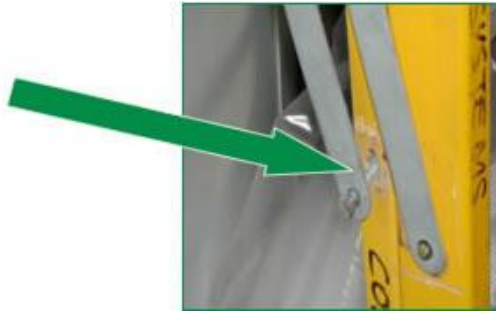


Do not use the ladder if rungs are bent, missing or loose as the ladder could be unstable

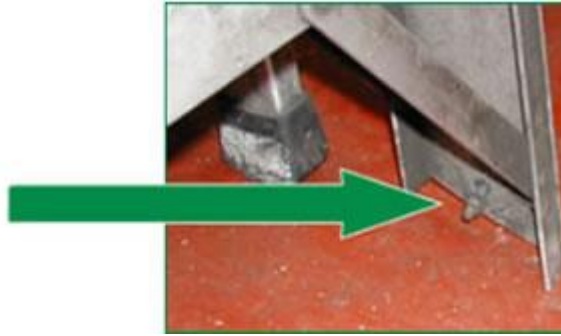


## Visual Guidance for Inspecting Stepladders

Do not use the stepladder if locking bars are bent or the fixings are worn or damaged as the ladder could collapse

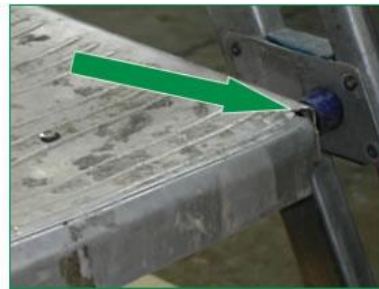


Do not use the stepladder if feet are missing, worn or damaged as the ladder could slip



Do not use the stepladder if the platform is split or buckled as the stepladder could become unstable or collapse.

Also check the steps/treads are not contaminated, as they could be slippery



Do not use the stepladder if the fixings are loose as they could collapse



Do not use the stepladder if stiles are bent or damaged as the ladder could buckle or collapse

