

# FACT SHEET

2026

2027

This information is specific for the current academic year.



UMEÅ SCHOOL OF BUSINESS,  
ECONOMICS AND STATISTICS  
UMEÅ UNIVERSITY

# CONTACT INFO

UMEÅ SCHOOL OF BUSINESS ECONOMICS AND STATISTICS

## EXCHANGE STUDENT CONTACT

**International Coordinators at Umeå School of Business, Economics and Statistics (USBE):**

Martina Sundqvist and Sandra Rådahl

Incoming and outgoing student exchange

[exchange.usbe@umu.se](mailto:exchange.usbe@umu.se)

+46 90 786 80 27 / +46 90 786 80 22

Umeå School of Business, Economics and Statistics  
website: [www.umu.se/en/usbe/](http://www.umu.se/en/usbe/)

Website for incoming exchange students:

<https://www.umu.se/en/education/application-and-admission/future-exchange-students/>

Umeå University-wide Fact Sheet:

<https://www.umu.se/en/collaboration-and-innovation/for-partner-universities/>

Social Media: [www.umu.se/en/usbe/social-media/](http://www.umu.se/en/usbe/social-media/)

## DEPARTMENT CONTACT

**Department of Business Administration:**

Martina Sundqvist and Sandra Rådahl

[exchange.usbe@umu.se](mailto:exchange.usbe@umu.se)

+46 90 786 80 27 / +46 90 786 80 22

**Department of Economics:**

André Gyllenram

[study.advisor.econ@umu.se](mailto:study.advisor.econ@umu.se)

+46 90 786 61 43

**Department of Statistics:**

Emma Persson

[emma.persson@umu.se](mailto:emma.persson@umu.se)

+46 90 786 52 11

**Address:**

International Coordinators

USBE, Umeå University

SE-901 87 Umeå, Sweden





# EXCHANGE INFORMATION

<b>Level of exchange</b>	Undergraduate/Graduate courses.
<b>Duration of exchange</b>	One semester or a full academic year.
<b>Semester dates</b>	<b>Autumn semester 2026:</b> 31 August 2026 – 17 January 2027 <b>Full academic year 26/27:</b> 31 August 2026 – 6 June 2027 <b>Spring semester 2024:</b> 18 January 2027 – 6 June 2027  Please consult the <a href="#">Academic calendar</a> for more detailed semester dates.
<b>Nomination period</b>	<b>Autumn semester and full academic year:</b> 1 March – 1 April <b>Spring semester:</b> 1 September – 1 October  In event of the dates above occurring on a weekend/holiday, the deadlines are postponed to the next weekday.  <b>Important:</b> Only online nominations in Solemove within the nomination period will be accepted.
<b>Application period</b>	<b>Autumn semester and full academic year:</b> 1 March - 15 April <b>Spring semester:</b> 1 September - 15 October  In event of the dates above occurring on a weekend/holiday, the deadlines are postponed to the nearest weekday.  After the nomination is submitted, an automatic e-mail from the nomination system Solemove with the application instructions will be sent to nominated student(s).
<b>Insurance</b>	Exchange students are covered by an insurance policy, Student IN.  The insurance covers necessary and reasonable costs for emergency health, dental care and damage to property. Travels outside of Sweden is not included in the cover.  EU/EEA citizens are required by the Swedish authorities to bring the <a href="#">European Health Insurance Card</a> .  <b>Please note!</b> No matter which nationality, students are strongly advised to have their own Health, Travel and Accident insurance policy.



# ACADEMIC INFORMATION

## Course catalogue

Incoming exchange students to USBE can take courses offered by all departments at Umeå University. Umeå University offers a wide range of [courses in English for exchange students](#).

Students can apply for all courses in the catalogue. To be admitted to a course, there must be places available, and the student must fulfil the course requirements.

Student nominated through USBE agreements have a priority in admission to USBE courses if they meet the requirements and places are available.

Students who want to apply for courses instructed in Swedish need to have reached a level of B2 or C1 depending on which course they wish to apply for. If a student wishes to apply for courses instructed in Swedish, they should contact the International Office to receive information on how to apply.

Contact the International Office for more information: [incoming.io@umu.se](mailto:incoming.io@umu.se)

## Course load

One academic term comprises 20 weeks. Full-time study consists of 30 ECTS per term. This corresponds to approximately 40 hours of study per week including a varying number of lectures and classes. Most courses consist of 7.5, 15 or 30 ECTS.

1.5 ECTS is the equivalent to one week of full-time study.

## Submitting an application

### Courses should not clash

According to the Swedish study system full-time courses (100 % tempo) are taken **one at a time rather than parallel**. Therefore, it is important to carefully check which week each course starts and ends. The information is available under "Apply" on the individual course page.

More information about the study duration can be found at [Study system - the basics](#).

### Course changes are very restricted

Please note that there is no add/drop period. Students' course selection will be set after the application deadline.

### Course requirements

The requirements are listed on the individual course page.

Note that **exchange student do not have to prove their English language proficiency**.

### 30 ECTS equals full-time studies

Student can be admitted up to 30 ECTS, any exceeding courses will be dropped from the application, with the exemption for *Swedish for International Students, Beginners' Course I, II, III*. These courses can be selected in addition to 30 ECTS in other subjects.

## Examination period

Normally there are no final exams that cover the entire semester's course work or that cover an entire general study programme. This means that exams are given at the end of each course, and not at the end of the semester.

**Please note** that students are required to register/sign up for exams at Umeå University. Failure to do so will mean that the student cannot sit the exam.

## Transcripts

Transcripts for exchange students are emailed to the student's home university at the end of their study period at Umeå University.

### **Transcripts are usually produced:**

Spring term: Early July

Autumn term: February/March

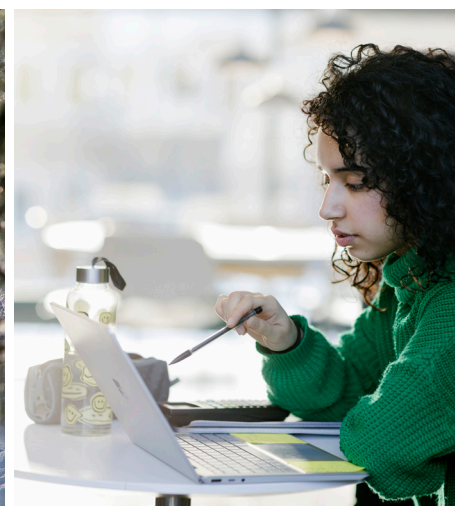
Students can request transcripts by contacting the International Coordinators at USBE: [exchange.usbe@umu.se](mailto:exchange.usbe@umu.se)

## Support for students with disabilities

We offer individual support to students who have a disability. The support aims to ensure the student may pursue their studies under the same conditions as their peers.

[Support services](#)

[Study with a disability](#)





# ARRIVING AND ORIENTATION

<p><b>Recommended arrival days</b></p>	<p><a href="#">Arrival days for new students</a></p>
<p><b>Orientation</b></p>	<p>The Orientation consists of a series of lectures and activities that are designed to help students become acquainted with life in Umeå and studies at our university.</p> <p>Please refer to the <a href="#">Orientation webpage</a> for specific dates for the upcoming semester.</p>
<p><b>Accommodation</b></p>	<p>Umeå University offers exchange students the opportunity to apply for halls of residence close to the university.</p> <p><a href="#">More information on student housing</a></p> <p><b>Meal plan:</b> Students are responsible for cooking their own meals, and the residence halls are equipped with common kitchens for this purpose. At Umeå University there are lunch rooms where students can heat (microwave) their food. Students can also buy their meals and fika at Umeå University's restaurants and cafés.</p> <p><b>Off-campus accommodation:</b> It is possible to rent from private landlords. If so, we strongly recommend students to start the search early and not to rely on finding their accommodation after their arrival in Umeå.</p>
<p><b>FAQ International Student Guide</b></p>	<p>If you or your students have any questions, you can check our frequently asked questions (incoming exchange students) where you may find the answers you need.</p> <p>Important information can also be found in our <a href="#">International Student Guide</a>.</p>



UMEÅ SCHOOL OF BUSINESS,  
ECONOMICS AND STATISTICS

UMEÅ UNIVERSITY