

# Go Beyond Boundaries

12<sup>th</sup> in the UK

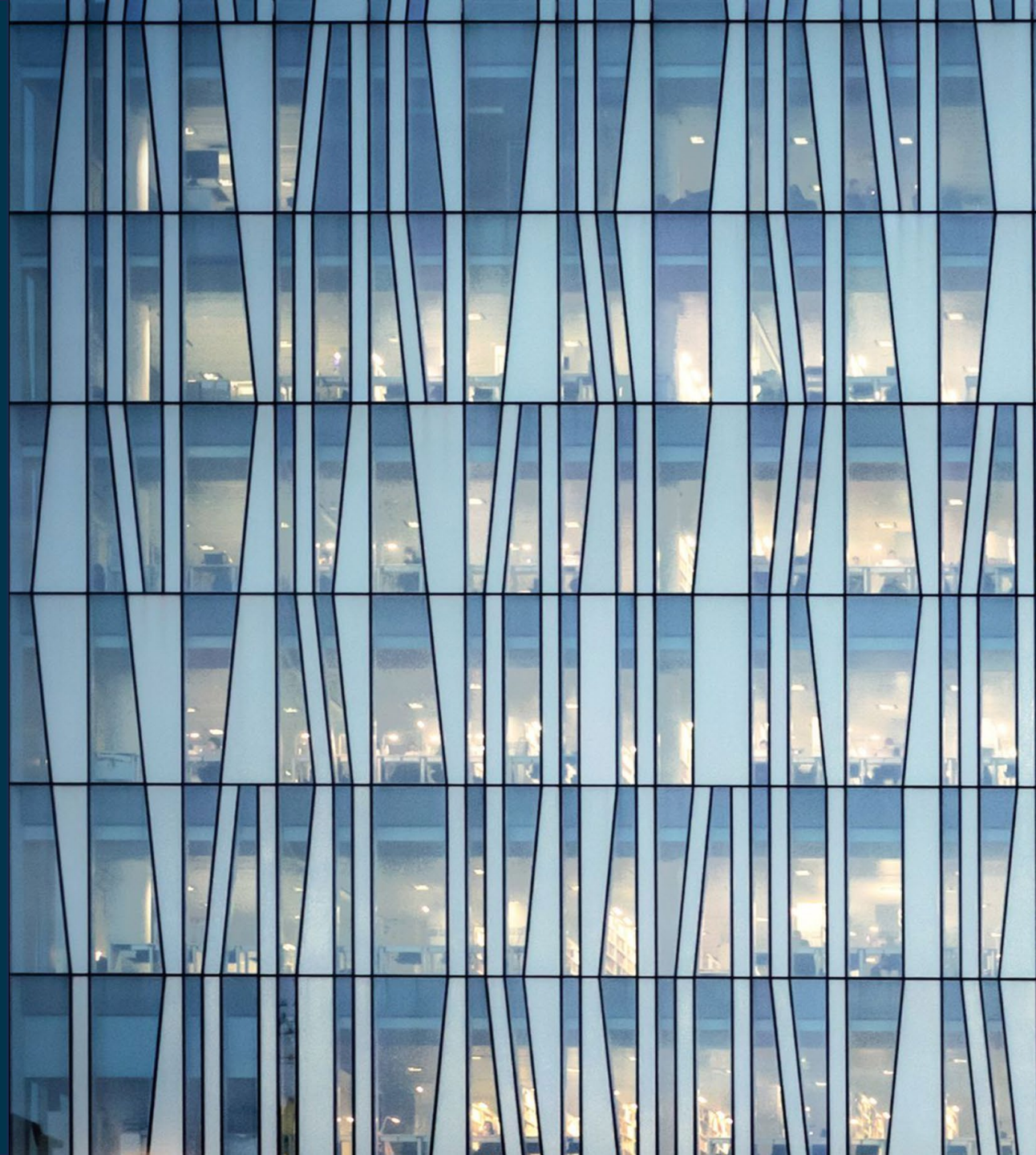
Source: Guardian University Guide 2024

EST. → 1495



# Welcome to our Virtual Applicant Information Evening!

- The webinar will start shortly - we recommend using Google Chrome
- There will be a Q&A following the event – please post your questions in the chat box to the right of the screen – **all messages here will be public**
  - Please **do not** share any personal contact information, such as social media accounts or phone numbers
- You can also send private direct messages by clicking the circle next to a moderator's name



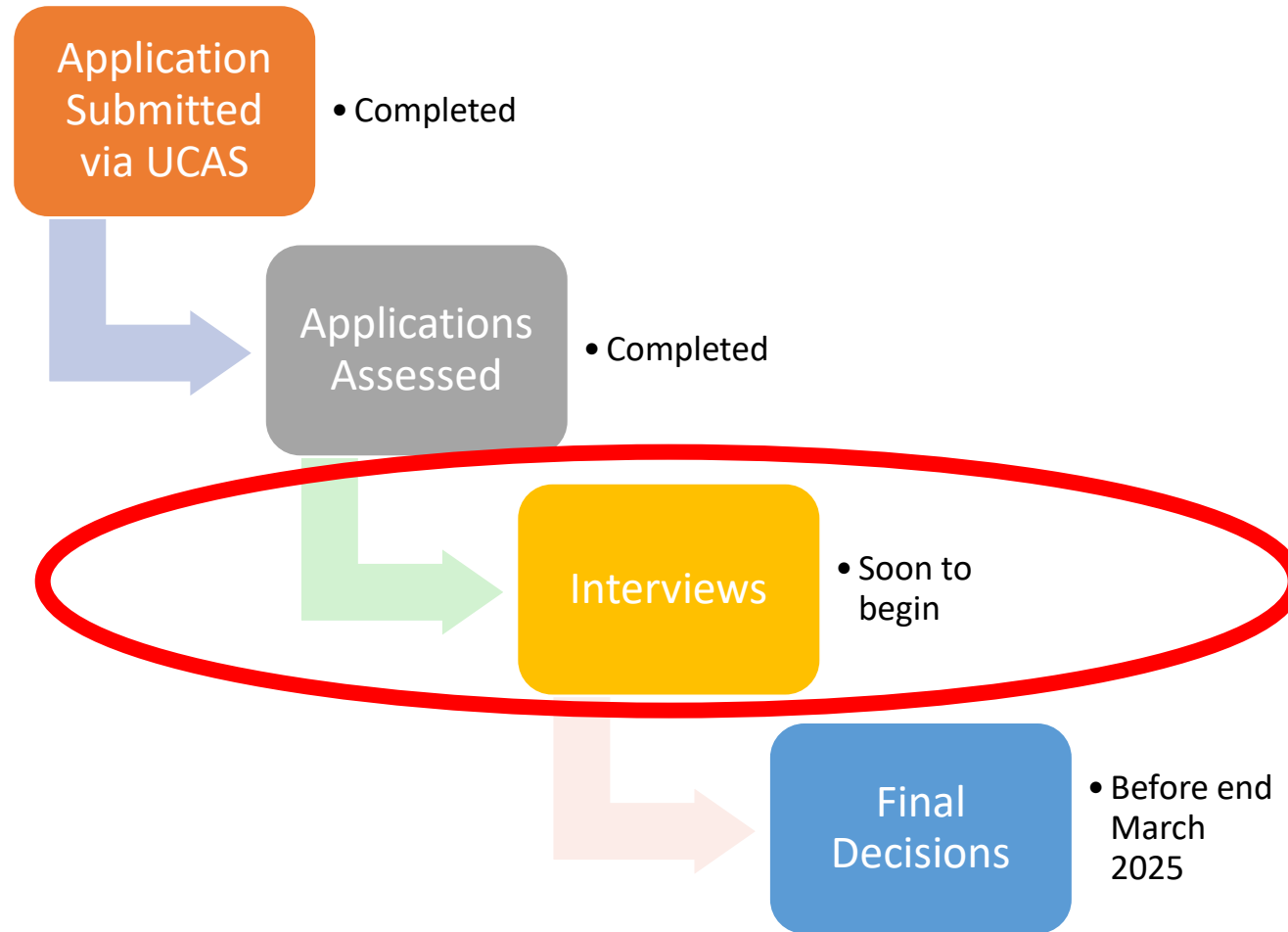
# Programme

- Welcome
- Admissions process & Studying Medicine at the University of Aberdeen
  - Medical Admissions Team
- Student Life
  - Stephanie Walker, Medical Student
- Finance and Accommodation
  - UK Student Recruitment Team
- Q&A



Go Beyond  
Boundaries

# Application Journey





# Coming to Interview

- Format – Multiple Mini Interview
- 5 x 5-minute stations, 1.5 mins in between
  - Motivation
  - Core Qualities
  - Teamwork
  - Professionalism
  - Critical Thinking & Problem Solving
- Coming to Aberdeen
  - Free bus travel under 22
- Reasonable adjustments?
- Remember your ID
- Arrive on time!!

## Final Decisions

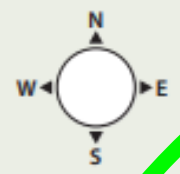
- Intake numbers are controlled by SFC
- Places available ~298
- How and when



# Studying Medicine at Aberdeen

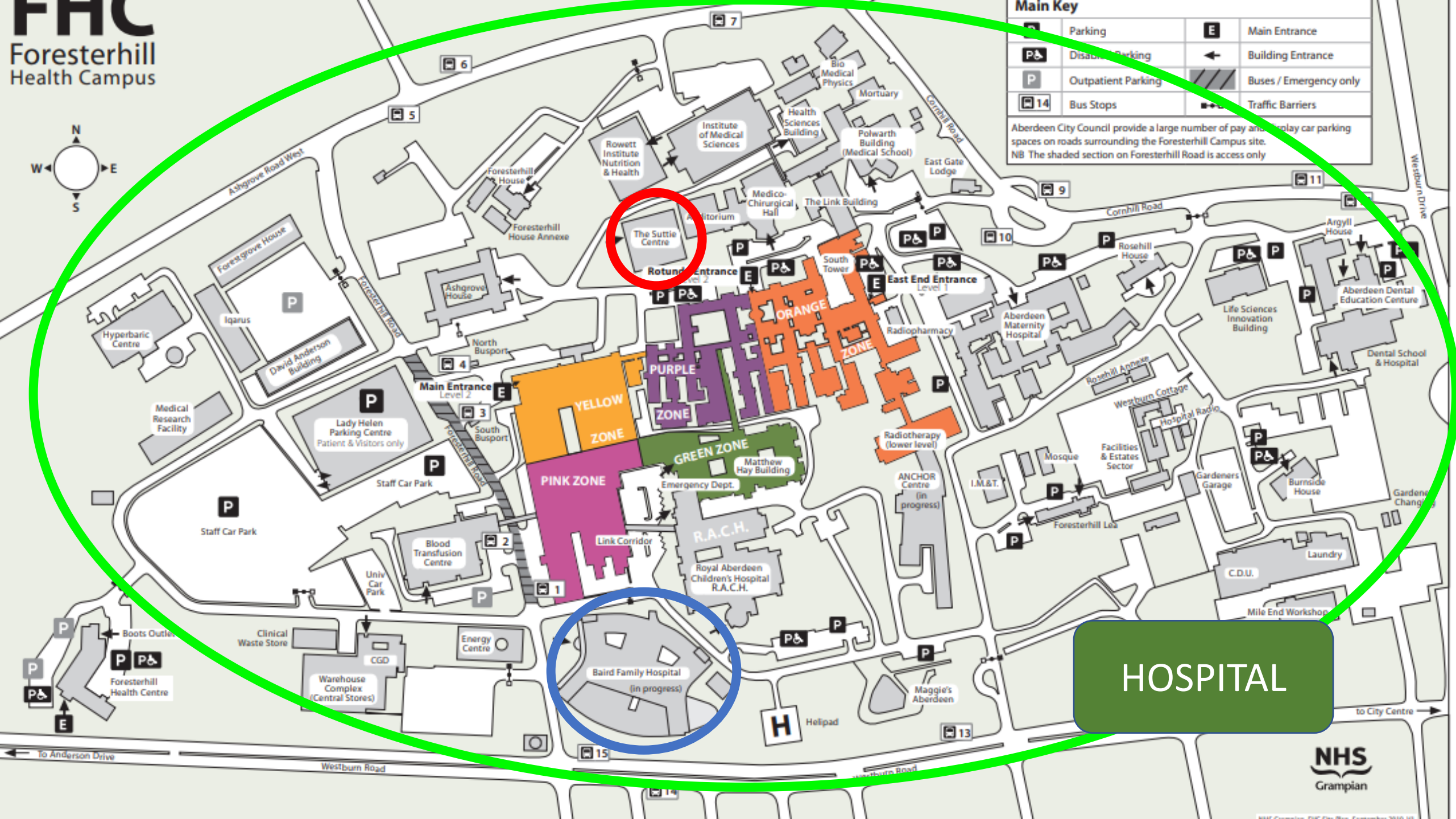
Go Beyond  
Boundaries





	Parking		Main Entrance
	Disabled Parking		Building Entrance
	Outpatient Parking		Buses / Emergency only
	Bus Stops		Traffic Barriers

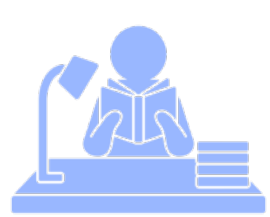
Aberdeen City Council provide a large number of pay and display car parking spaces on roads surrounding the Foresterhill Campus site.  
NB The shaded section on Foresterhill Road is access only



HOSPITAL



# Curriculum Overview



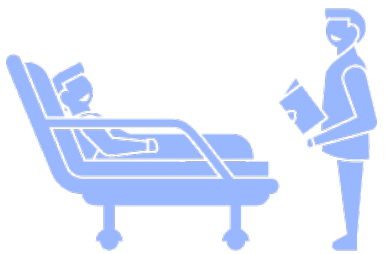
Science

+

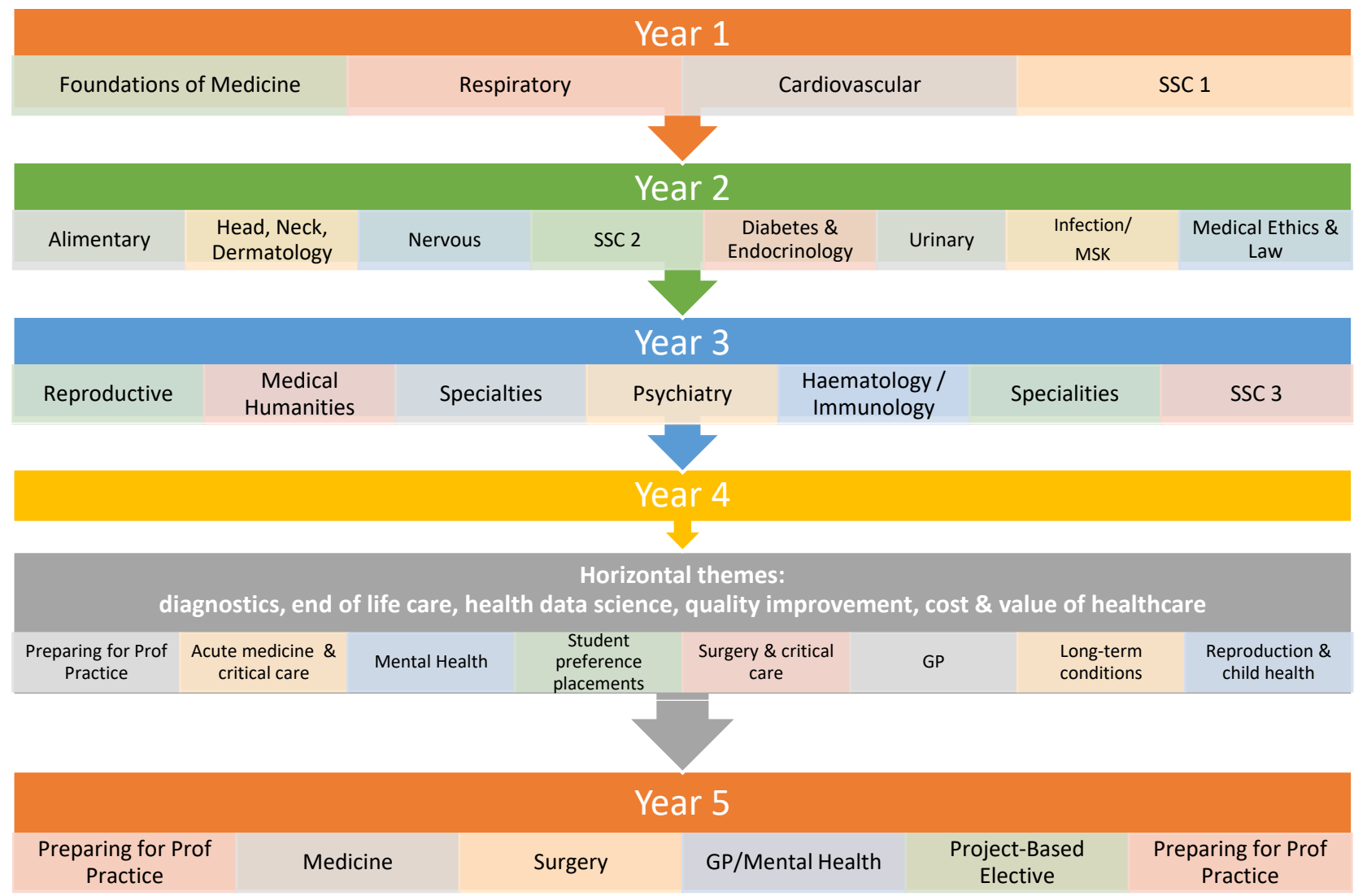


Clinical

Clinical  
attachments



Learning +  
Preparing for FY



# Years 1 - 3



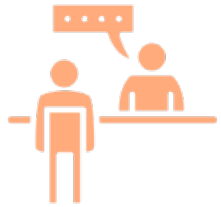




Biochemistry



Anatomy

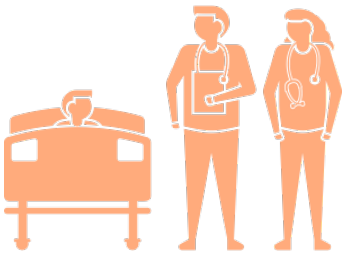


Physiology

History  
taking



Clinical skills



Clinical placements

Year 1

Foundations of  
Medicine

Respiratory

Cardiovascular

SSC 1

Year 2

Alimentary

Head, Neck,  
Dermatology

Nervous

SSC 2

Diabetes &  
Endocrinology

Urinary

Infection/  
MSK

Medical Ethics  
& Law

Year 3

Reproductive

Medical  
Humanities

Specialties

Psychiatry

Haematology /  
Immunology

Specialties

SSC 3

# Suttie Centre

- Clinical Skills
- Anatomy
- Café
- Computer Lab
- Lecture Theatre





# Clinical Skills

- Clinical Tutors
- Patient Partners
- Models
- Drop in Room
- Simulation



# Anatomy

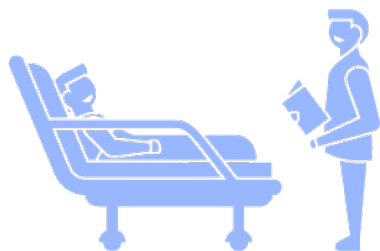
- Studied in years 1, 2 and 3
- Post-mortem education
- Pro-section based
- Interactive and fun tutorials



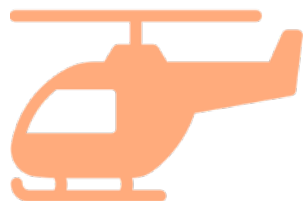


# Years 4 - 5





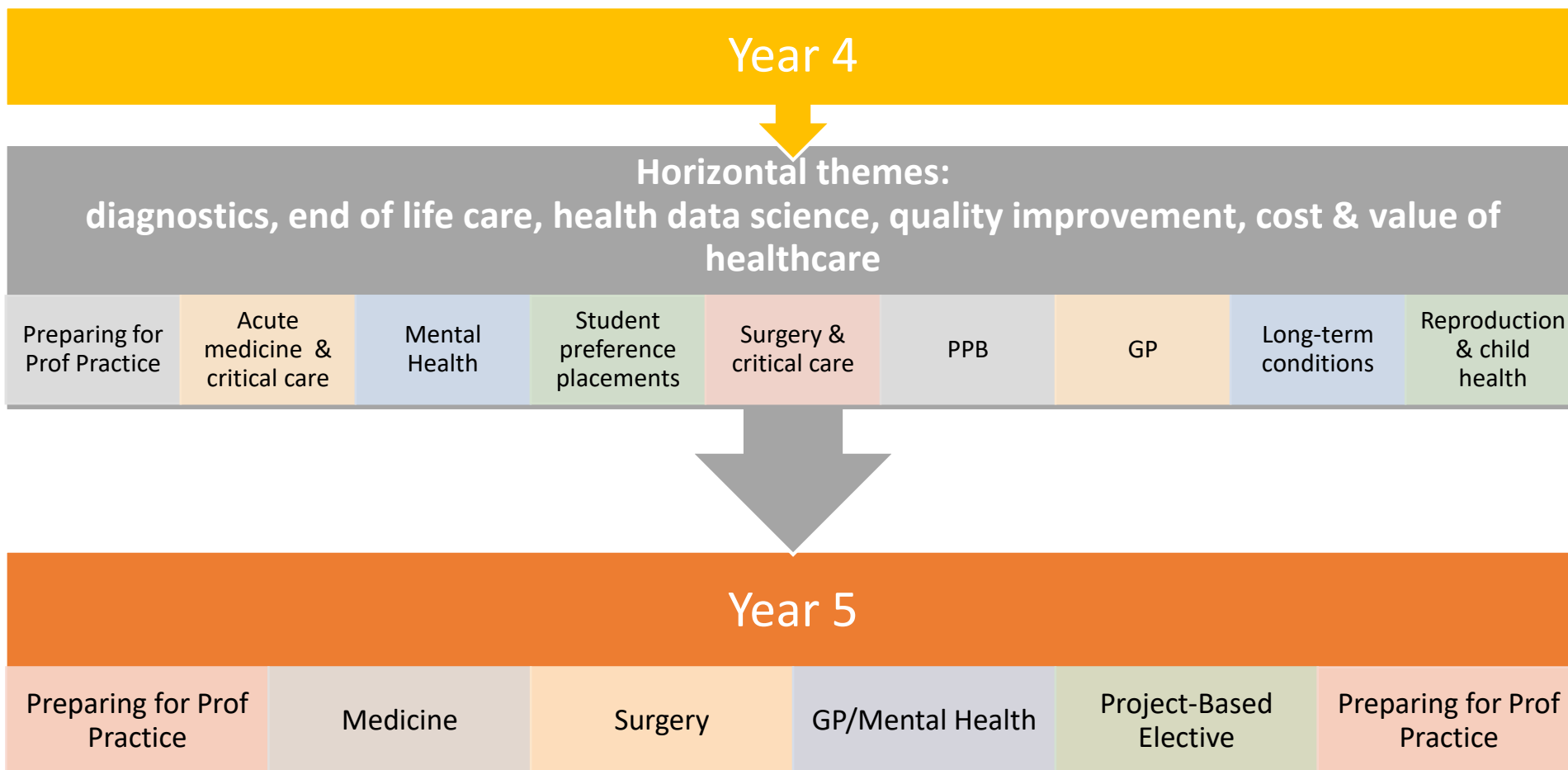
Clinical  
attachments



Remote and Rural



Elective and choices





# Remote & Rural



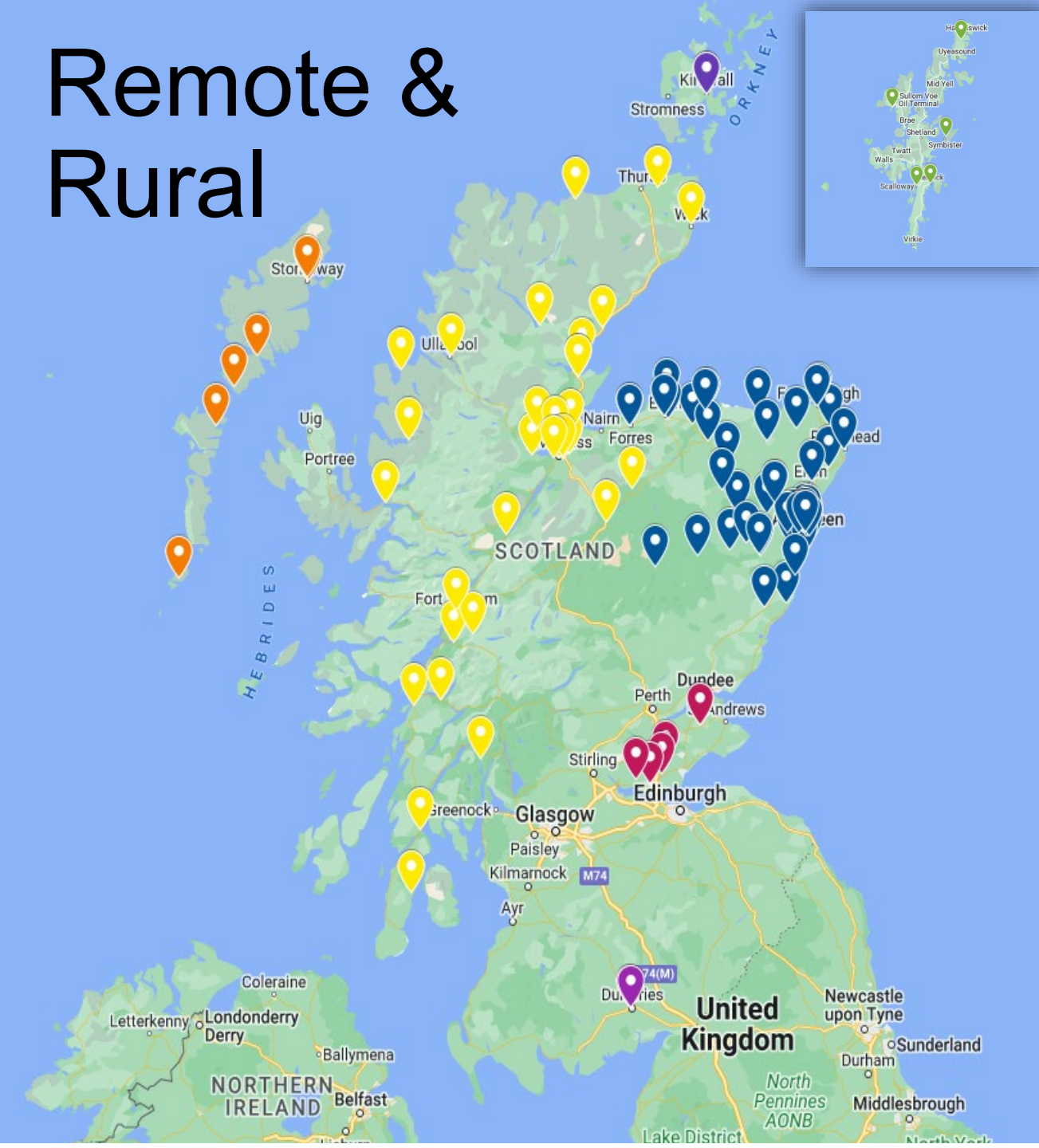
**\*\* Core part of curriculum \*\***

**Years 1-3** Clinical Placements in Remote and Rural settings (Rural SSC)

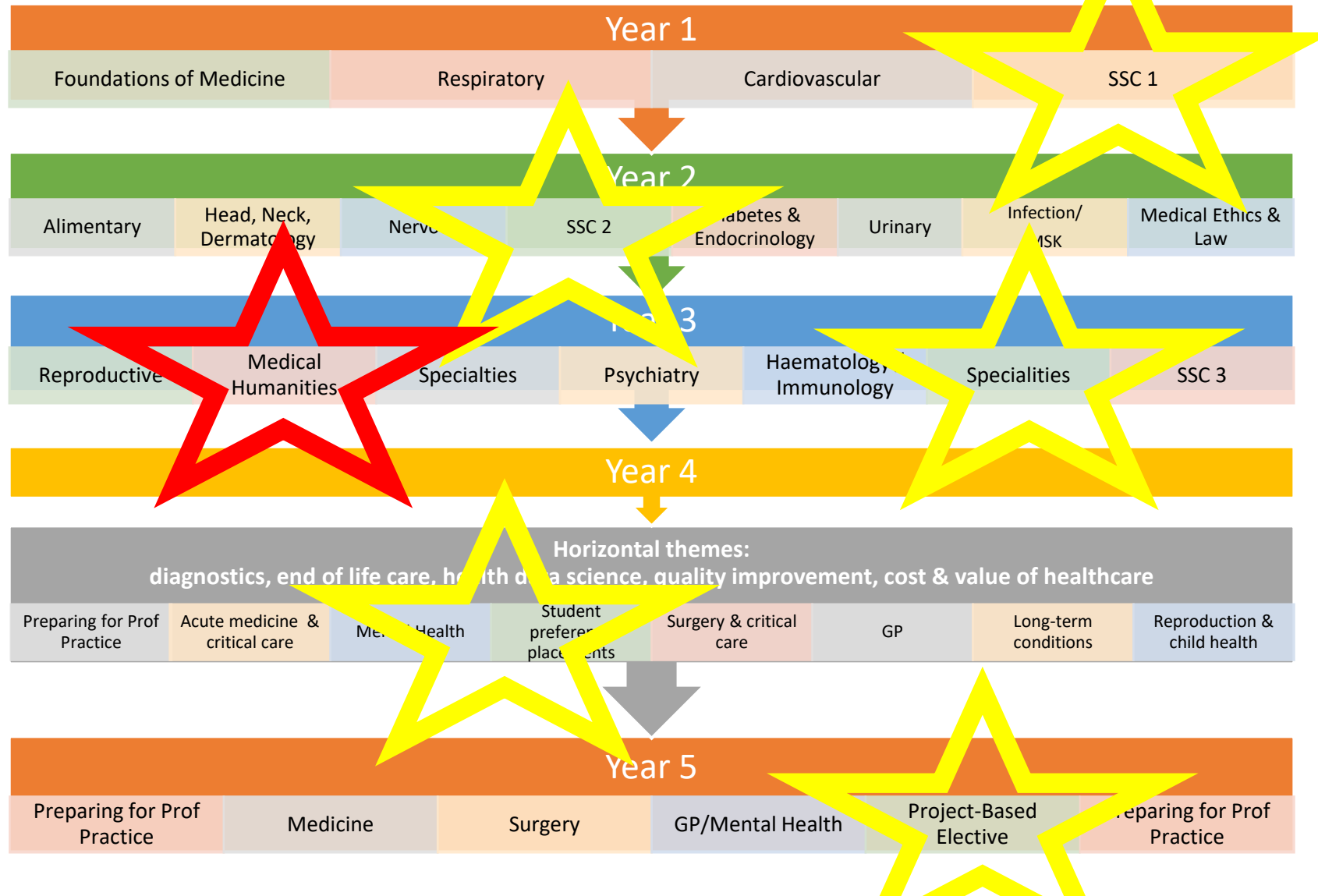
**Year 4** One clinical attachment in Inverness  
**(option)** (Whole year in Inverness)

**Year 5** Fort William, Orkney, Shetland, Western Isles

**Go Beyond Boundaries**



# Student Selected Component



# Medical Humanities

## Study a humanity course in a range of subjects:

- Anthropology
- Economics
- Music
- Art
- Education
- Theology, Philosophy, Ethics
- Languages
- History of Medicine
- Global Health



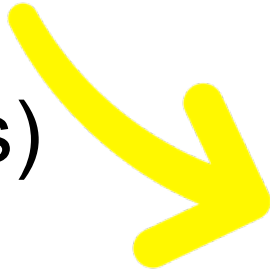


5 years is a long time to study one thing,  
surely, I could fit in a second degree in  
somewhere?

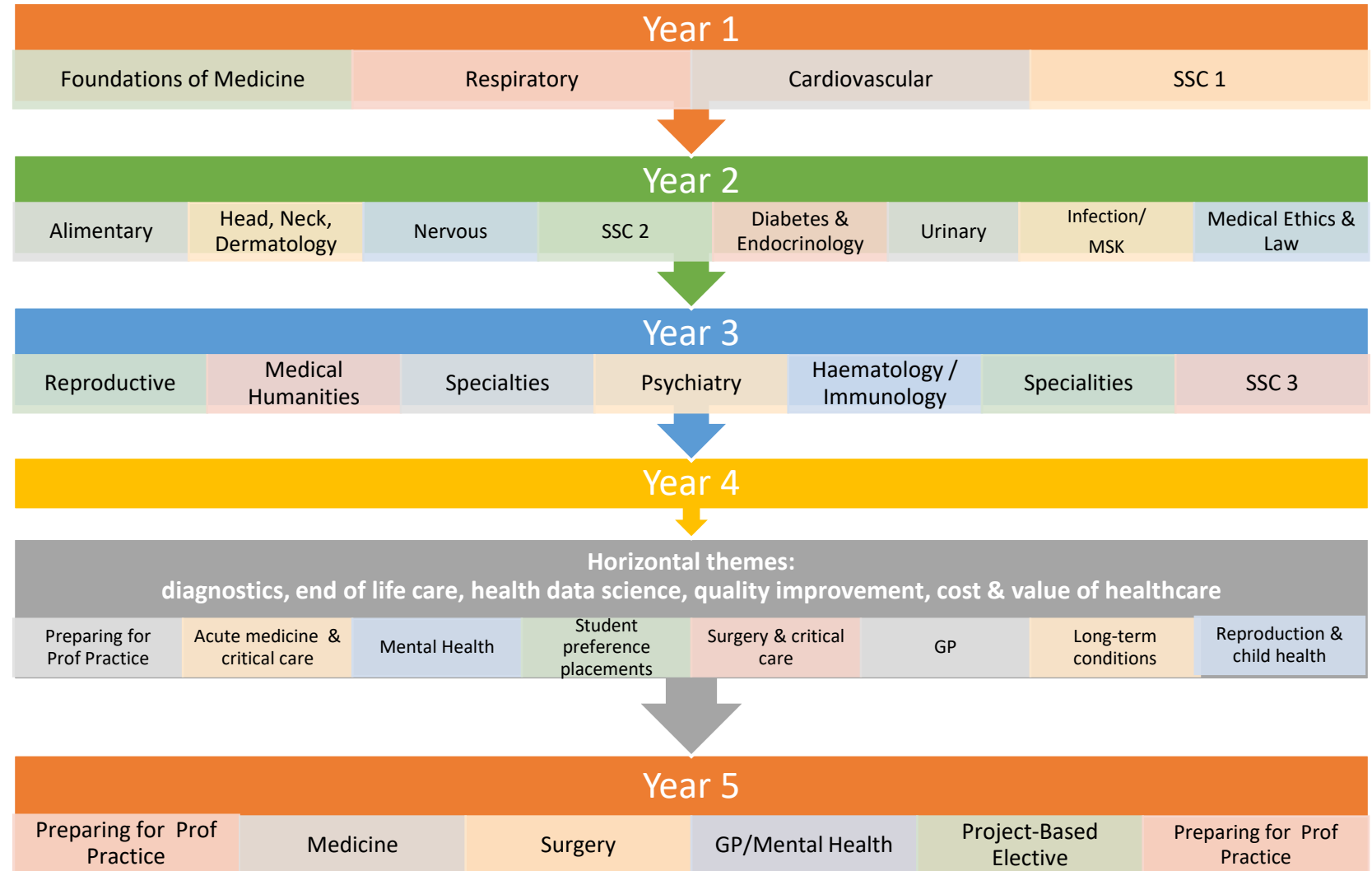


# Intercalating

Bachelor of  
Science  
(BSc Hons)



Master of  
Science  
(MSc)



# Intercalating Options

- Undergraduate

## BSc (Hons) Medical Science

- Biomedical Science Degree
- Molecular Science Degree

## BSc (Hons) Medical Science

- Medical Humanities



- Postgraduate Masters

- MPH (Masters of Public Health)
- Cardiovascular Science and Diabetes
- Clinical Pharmacology
- Genetics
- Medical Imaging
- Nutrition
- Many more!





# Where can I go to get a bit of help?



# Student Support

- Access to all services offered to all University of Aberdeen students!
- Medical school specific support
  - Year lead and secretary
  - Medical student support team
  - Regent scheme
  - Student pairing scheme
  - Specialist mental health support
  - Student learning service

# Student Support

- Access to all services offered to all University of Aberdeen students!
- Medical school specific support
  - Year lead and secretary
  - Medical student support team
  - Regent scheme
  - Student pairing scheme
  - Specialist mental health support
  - Student learning service



# Your student support team



**Dr Wendy Lowe**  
Lead for Student Support



**Dr Nader Maria**  
Deputy Lead for Student Support

**Go Beyond  
Boundaries**

# Student Life

Stephanie Walker  
Medical Student Ambassador

Go Beyond  
Boundaries



- Over 200 sports clubs and societies to join – academic, hobbies, cultural, performing arts
- Student media: The Gaudie, Aberdeen Student Radio
- Charity campaigns, Raising and Giving, committees
- Aberdeen University Students' Association (AUSA)

**Go Beyond  
Boundaries**





## Medical Societies

- Over 50 medic-ran student societies!
- MedSoc is the University's oldest and largest society!
- Music, sports and everything in-between!



Go Beyond  
Boundaries







# Sports

- On-campus facilities at Aberdeen Sports Village and rugby pitches
- Over 55 sports clubs – all levels from beginner to competitive sport
- Learn a new sport, join teams and compete across the country
- Social side of sport







## Aberdeen Sports Village and Aquatics Centre







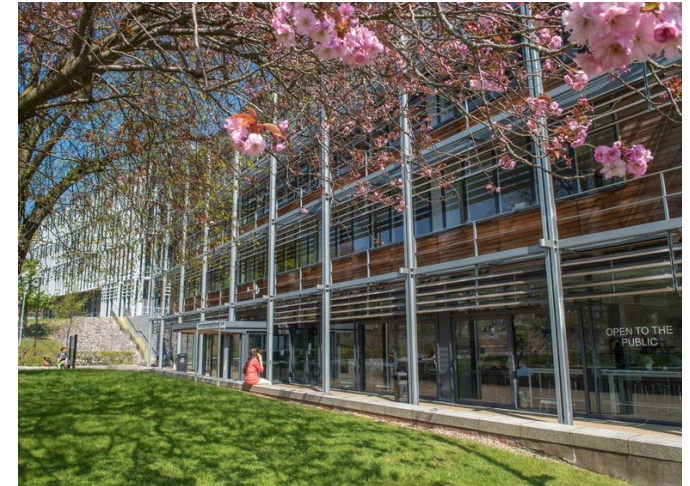
## Support from a caring community

- Personal Tutors and Regents
- AUSA (Student Union)
- Buddy Scheme
- Nightline
- Medical practices
- Chaplaincy
- 24/7 Residence Security

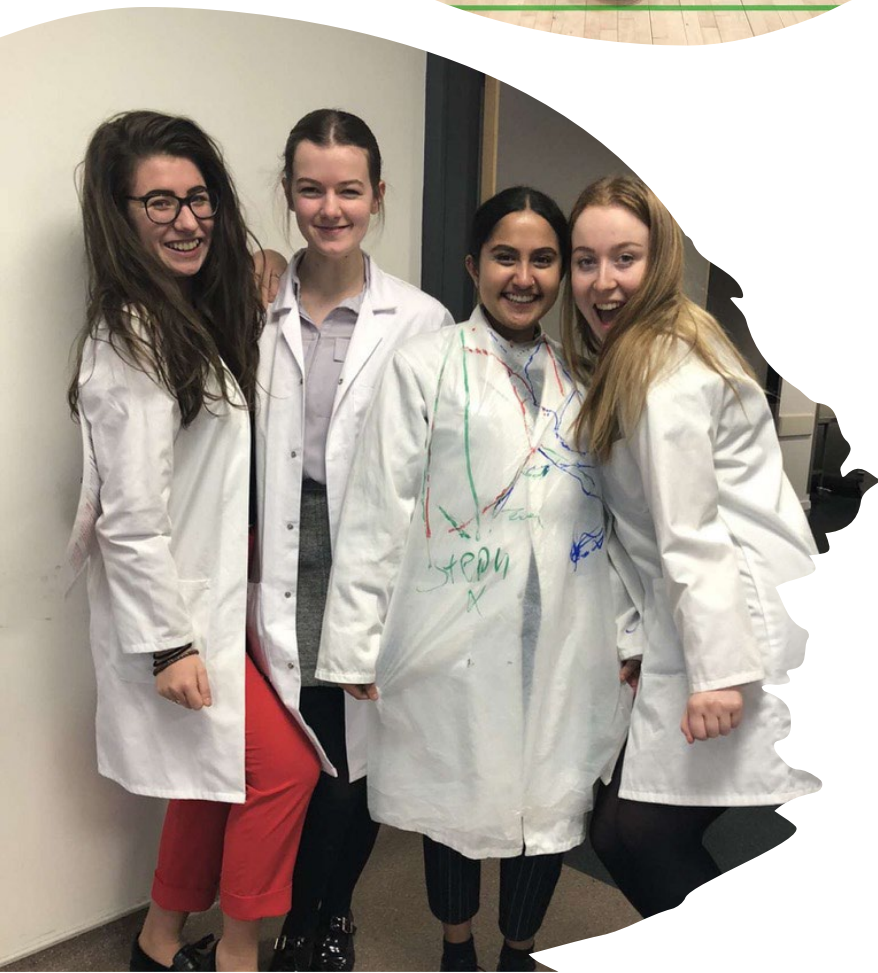
Go Beyond  
Boundaries

# Top Tips for Interview

1. Expand on all your examples!
2. Link everything back to medicine!
3. Be yourself and smile!







**Go Beyond  
Boundaries**





## Top 5 favourite things

1. Early clinical contact
2. Societies
3. Libraries
4. Humanities
5. Aberdeen Uni Community

**Go Beyond  
Boundaries**

# Accommodation



# Accommodation



- Most first year students live in Hillhead Student Village, our most popular option for undergraduate students
- Guaranteed offer of accommodation for 2025 entry (terms and conditions apply)
- Self-catered from £103/week - £178/week\*
- All bills included and 24/7 security
- \*Please note: 2024 prices

Go Beyond  
Boundaries



# Hillhead Student Village

- 2,000 students living across different properties at the Village
- Central building with social and activity space
- 20-minute walk or short shuttle bus ride from campus
- Supermarkets and amenities within few minutes' walk



# Finance and Funding

# Tuition Fees



- Scotland: Tuition fees are covered by the Scottish Government\*. Students from Scotland can apply to SAAS to cover their tuition fees; these do not need to be repaid.
- English, Wales and NI: Tuition fees are £9,250 per year\*. Students from England, Wales or Northern Ireland can apply to Student Finance England, Wales or Northern Ireland for a tuition fee loan to cover their fees.
- ROI: Tuition fees are £9,250 per year\*. Can apply to Student Awards Agency Scotland (SAAS) for a tuition fee loan\*\*
- International: £50,100 per year\*

\*fee status determined at the time of your application

\*\* Ts & Cs apply

Go Beyond  
Boundaries



# Student Loans & Grants



You can also apply for a student loan or grant to help with living costs while at university - the amount you receive will depend on your household income

**Scotland:** Maintenance loans between £8400 and £9400 per year

**England:** maintenance loans up to £10,227 per year

**Wales:** combination of maintenance loan and maintenance grant totalling up to £12,150 – more or less loan depending on household income assessment

**Northern Ireland:** maintenance loans up to £6,776 and maintenance grants up to £3,475

**Ireland:** SUSI support may be available from the Irish Government

*More information online – figures are for 2023/2024 entry and are correct as of Nov 24*

**Go Beyond  
Boundaries**

# Scholarships



There are a number of scholarships available each year for students who meet the eligibility criteria

- Application details and deadlines can all be found online:  
<https://www.abdn.ac.uk/study/funding/>

[Study](#)[About](#)[Research](#)[Alumni & Giving](#)[Business](#)[Quick Links](#)[Q Search](#)

SEARCH



# What are your next steps?

- If you have been invited to interview, you will receive further information about your next steps.
- Visit our website and follow us on social media for more useful information and videos
- Make your decision on UCAS Hub
- Apply for Accommodation



Go Beyond  
Boundaries



# What are your next steps?

If you receive a conditional offer – best of luck!

- SQA Results Day – 5th August 2025
- A- Level Results Day – 14th August 2025

If your results don't go to plan, remember you can get in touch with us on results day to discuss your options

See you in September for the start of term!

- Move in weekend: Thursday 11th September – Sunday 14th of September
- Welcome Week: starts Monday 15th September
- Teaching: starts Monday 22nd September



Go Beyond  
Boundaries

## Q&A session

- Sarah Miller, Dr Ching-Wa Chung, Dr Susan Logan, (Medical School)
- Stephanie Walker (Medical Student Ambassador)
- Anna Johnston (Widening Access & Articulation)
- Rowan Cruickshank and Iain Duff (All other questions)





## Contact Us

UK Student Recruitment Team

T: +44 (0)1224 272 090

E: [study@abdn.ac.uk](mailto:study@abdn.ac.uk)

[abdn.ac.uk/study](https://abdn.ac.uk/study)

 @aberdeenuni

 @universityofaberdeen

 @uniofaberdeen

 @uniofaberdeen

