

**14<sup>TH</sup> ANNUAL ACADEMIC DEVELOPMENT  
SYMPOSIUM | THURSDAY 27 APRIL 2023**

**KING'S COLLEGE CONFERENCE CENTRE,  
OLD ABERDEEN CAMPUS AND VIA MS TEAMS**

**FROM SURVIVING TO THRIVING:  
BUILDING RESILIENT LEARNERS THROUGH  
ASSESSMENT & FEEDBACK PROGRAMME**

## 09:30-10:00 REGISTRATION AND POSTERS (VOTING CLOSES AT 15:00)

James McKay Hall, King's College Centre  
MS Teams General Room



### 10:00 WELCOME & INTRODUCTION

KQG5 Auditorium, King's College Centre  
MS Teams Room 1 - Welcome and Keynote

#### PROFESSOR STEVE TUCKER

Institutional Resilient Learning Communities  
Enhancement Theme Lead and Dean for  
Quality Assurance and Enhancement



### 10:00-11:00 EXTERNAL KEYNOTE

KQG5 Auditorium, King's College Centre  
MS Teams Room 1 - Welcome & Keynote

#### PROFESSOR SALLY BROWN

HE Consultant, Emerita Professor at Leeds Beckett  
University & Visiting Professor at Universities of  
Plymouth, Edge Hill and Liverpool John Moores



#### PROFESSOR KAY SAMBELL

HE Consultant & Visiting Professor of Assessment for  
Learning at the University of Sunderland  
and the University of Cumbria



SCAN HERE  
FOR VOTING  
FORM



@AbdnCAD

#CADSymp23

## KEYNOTE: **FROM SURVIVING TO THRIVING: USING COMPASSIONATE ASSESSMENT & FEEDBACK TO FOSTER ENGAGEMENT & EFFECTIVE LEARNING**

Assessment and feedback have a significant impact on the lives of both students and staff:: in this keynote, Professors Sally Brown and Kay Sambell discuss the importance of universities recognising that assessment and feedback processes can have a huge positive or negative impact on students, depending on how they are directed, and that staff engaging in designing and marking assessments need compassionate approaches that don't result in unrealistic workloads or extreme stress for themselves or their students.

Professors Brown and Sambell will further argue that students who engage in authentic assessment tend to have a greater sense of belonging and commitment than those that use only traditional assessment formats. In this keynote, participants will have opportunities to:

- Consider how we can make assessment more compassionate for staff and students;
- Review how authentic assignments can be systematically and efficiently designed to foster student engagement;
- Examine examples of authentic assessment for a variety of different disciplines;
- Consider how to redress imbalances between formative and summative assessment;
- Discuss how changes can be made incrementally to improve the quality of learning opportunities afforded by assessment activities.



SCAN HERE  
FOR VOTING  
FORM



@AbdnCAD

#CADSymp23

**11:00-11:15 BREAK AND POSTERS** (VOTING CLOSES AT 15:00)

James McKay Hall, King's College Centre

**11:15-12:00 PARALLEL SESSIONS ON RESILIENT LEARNING****CHOOSE ONE SESSION FROM THE 3 BELOW****CO-CREATING LEARNING EXPERIENCES: THE STUDENT PERSPECTIVE**

Collaboration and partnership between educators and students are at the heart of the current QAA Scotland Enhancement Theme, and co-creation of the curriculum is a powerful way to foster engagement and enhance the student experience. A panel of students, chaired by Professor Ruth Taylor, Vice-Principal (Education), will share their experiences and insights of working in different projects at the University. Their presentations will be followed by an open discussion of the different approaches that can be taken to involve students in the development and delivery of their education. This is a valuable opportunity to hear from the student perspective and gain new ideas for incorporating co-creation in your own teaching practice.

**CHAIR:** **PROFESSOR RUTH TAYLOR** Vice-Principal (Education)**PANELLISTS:** **KRISTINA BENEDIKOVA** eLearning Support Assistant,  
Centre for Academic Development**MAILIE BESSON** Student Intern (Transforming the  
Experience of Students Through Assessment),  
School of Social Science**EMILY CLELAND** Teaching Assistant, School of Medicine,  
Medical Sciences and Nutrition**LAURA FORERO** eLearning Support Assistant,  
Centre for Academic Development**JACK MURRAY-BIRD** eLearning Support Assistant,  
Centre for Academic Development**BRENNA QUINTON** PGR Student, School of Language,  
Literature, Music and Visual Culture**ROOM:** KQG5 Auditorium, King's College Centre  
MS Teams, Room 2A - Co-creating Learning Experiences

**SCAN HERE  
FOR VOTING  
FORM**



@AbdnCAD

#CADSymp23

## PRESERVING ACADEMIC INTEGRITY IN THE AGE OF AI

Academic integrity and assessment rigour remain a focal point in Higher Education, faced with recent threats from contract cheating websites and the growth of AI technologies. This interactive session offers a platform to explore ways to preserve a culture of honesty and integrity, helping to ensure the protection of our academic standards. Discussions may cover effective assessment design to reduce academic misconduct, appropriate deterrents and approaches to preventing misconduct, and the responsible use of technology to foster a resilient learning community at the University of Aberdeen.

**CHAIR:** **DR KIRSTY KIEZEBRINK** Dean for Educational Innovation

**PANELLISTS:** **DR SCOTT ALLAN** Lecturer, Business School  
**DR SHONA POTTS** Senior Lecturer,  
 School of Language, Literature, Music and Visual Culture  
**DR ARABELLA SINCLAIR** Lecturer,  
 School of Natural and Computing Sciences  
**FELICIA ILELADEWA** Student Intern (Academic Integrity),  
 Centre for Academic Development

**ROOM:** KCG7, King's College Building  
 MS Teams, Room 2B - Academic integrity



SCAN HERE  
FOR VOTING  
FORM



@AbdnCAD

#CADSymp23

## ENHANCEMENT PROJECTS SHOWCASE

### EVALUATING AND DEVELOPING THE EXPLICIT TEACHING OF ASSESSMENT SKILLS FOR FIRST YEAR EDUCATION STUDENTS

Faye Hendry, Dr John Mynott, School of Education  
with Student Interns Iona Berube and Georgie Smith

### STANDARDISED ASSESSMENT RUBRICS – HELP OR HINDRANCE TO FEED-FORWARD?

Dr Amudha Poobalan and Dr Leone Craig,  
School Medicine, Medical Sciences and Nutrition

### DEVELOPING RESILIENCE OF ADVANCED ENTRY STUDENTS

THROUGH PEER AND ACADEMIC SUPPORT Dr Jacqui Hutchison,  
Dr Heather Branigan, School of Psychology and Dr Sally Middleton,  
Access and Articulation Team

**CHAIR:** PROFESSOR STEVE TUCKER

**ROOM:** KQG3 Multimedia Room, King's College Centre  
MS Teams, Room 2C - LTEP Showcase

---

### 12:00-12:45 LUNCH BREAK AND POSTERS (VOTING CLOSES AT 15:00)

James McKay Hall, King's College Centre

---

### 12:45-13:45 IN-PERSON WORKSHOP

#### A PRAGMATIC APPROACH TO DESIGNING AND DELIVERING AUTHENTIC ASSESSMENT TASKS

In this workshop, building on the extensive resources Kay and Sally have created to support staff during pandemic times, (see <https://sally-brown.net/kay-sambell-and-sally-brown-covid-19-assessment-collection/>), we will review how effective and authentic assessment can be undertaken across the disciplines, with plenty of practical examples showing how participants at the workshop can readily and creatively implement these approaches at Aberdeen. Participants will have opportunities to:

- Consider a practical six-stage approach to designing authentic and constructively-aligned assessment activities;
- Review examples of authentic assessment tasks from across various disciplines;
- Discuss how these kinds of approaches can be implemented at University of Aberdeen



SCAN HERE  
FOR VOTING  
FORM



@AbdnCAD

#CADSymp23

**14:00-14:45 PARALLEL SESSIONS ON FEEDBACK & ASSESSMENT****CHOOSE ONE SESSION FROM THE 3 BELOW****RETHINKING ASSESSMENT FEEDBACK: INNOVATIVE APPROACHES TO ENHANCE STUDENT ENGAGEMENT**

This interactive session focuses on innovative feedback practices to enhance student engagement and learning. Panellists will share their experiences and insights on engaging students in the feedback process, as well as any innovative approaches to feedback that can improve student learning outcomes. The sharing of examples will be followed by an open discussion.

**CHAIR:** **DR MARY PRYOR** Senior Academic Skills Adviser,  
Centre for Academic Development

**PANELLISTS:** **EWAN BOTTOMLEY** Teaching Fellow,  
School of Psychology

**DR REBECCA WALKER** Lecturer,  
School of Natural and Computing Sciences

**DR JEN WALKLATE** Lecturer, School of Social Science

**LIAM BRADY** PGR Student, School of Medicine,  
Medical Sciences and Nutrition

**ROOM:** KCG7, King's College Building  
MS Teams Room 3A - Rethinking Assessment Feedback



**SCAN HERE  
FOR VOTING  
FORM**



**@AbdnCAD**

**#CADSymp23**

## DESIGNING INCLUSIVE, FLEXIBLE, ACCESSIBLE AND COMPASSIONATE ASSESSMENTS

This session will provide examples and best practices of inclusive assessment design and a discussion of ways to make assessments more accessible and flexible for students with diverse needs. This is a valuable opportunity to gain new ideas and insights on compassionate assessment practices that can benefit all students.

**CHAIR:** **DR WILL BARRAS** Lecturer, School of  
Language, Literature, Music and Visual Culture

**PANELLISTS:** **DR MONIKA GOSTIC** Teaching Fellow,  
School of Medicine, Medical Sciences and Nutrition  
**DR ZESHU SHAO** Teaching Fellow, School of Psychology  
**DR AARON THOM** Educational Development Adviser,  
Centre for Academic Development  
**ELANA ALATALO** Student Intern, Business School

**ROOM:** KQG3 Multimedia Room, King's College Centre  
MS Teams Room 3B - Designing Inclusive Assessments



SCAN HERE  
FOR VOTING  
FORM



@AbdnCAD

#CADSymp23

## SUPPORTING STUDENTS THROUGH THE DEVELOPMENT OF ASSESSMENT LITERACIES

How can we design and implement assessment *for* learning as well as *of* learning? And how can we help students understand the assessment process so that they can engage in and benefit from it? This session will explore the development of assessment literacies in both staff and students at the University of Aberdeen.

**CHAIR:** **DR MARTIN BARKER** Senior Lecturer,  
School of Biological Sciences

**PANELLISTS:** **CHRIS GRAY** Lecturer, School of Language, Literature,  
Music and Visual Culture  
**DR JACQUI HUTCHISON** Lecturer, School of Psychology  
**DR FLURINA WARTMANN** Lecturer, School of Geosciences  
**SAMU TURI** Student Intern (Transforming the Experience  
of Students through Assessment), School of Natural and  
Computing Sciences

**ROOM:** KQG4 City of Aberdeen Room, King's College Centre  
MS Teams Room 3C - Assessment Literacies

---

### 14:45-15:00 BREAK AND POSTERS (VOTING CLOSES AT 15:00)

James McKay Hall, King's College Centre

---

### 15:00-15:40 EXPERT PANEL

#### EXPERT-LED DISCUSSION ON ALL ASPECTS OF RESILIENT LEARNING, FEEDBACK AND ASSESSMENT.

**CHAIRS:** **PROFESSOR SALLY BROWN** HE Consultant  
**PROFESSOR KAY SAMBELL** HE Consultant

**PANELLISTS:** **PROFESSOR RUTH TAYLOR** Vice-Principal (Education)  
**DR KIRSTY KIEZEBRINK** Dean for Educational Innovation  
**PROFESSOR ANNE TIERNEY** Assistant Professor and  
Institutional Theme Lead, Heriot-Watt University  
**DR NEIL LENT** Lecturer Institute for Academic Development,  
University of Edinburgh  
**MILES ROTHOERL** AUSA Education Committee



SCAN HERE  
FOR VOTING  
FORM



@AbdnCAD

#CADSymp23

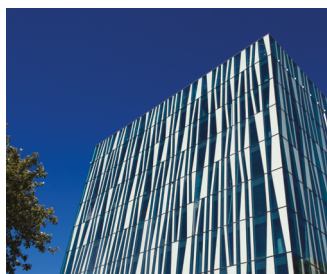
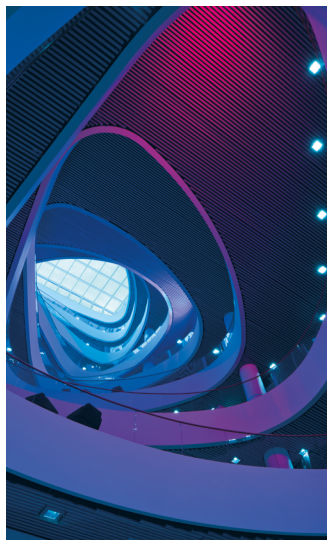


**15:40-16:00**

**PRESENTATION OF PRINCIPAL'S  
TEACHING EXCELLENCE AWARD,  
SYMPOSIUM POSTER COMPETITION  
AWARDS AND CLOSING REMARKS**

Presented by **PROFESSOR RUTH TAYLOR**  
Vice-Principal (Education)

**ROOM:** KCC Auditorium & MS Teams Room 4 -  
Expert panel and closing remarks



**SCAN HERE  
FOR VOTING  
FORM**



**@AbdnCAD**

**#CADSymp23**

**10**



The Centre for Academic Development supports staff and students from across the University in teaching, learning and professional development.

For general enquiries, please contact the Centre at [cad@abdn.ac.uk](mailto:cad@abdn.ac.uk) or +44 (0)1224 27 3030

DESIGN: CL0423