

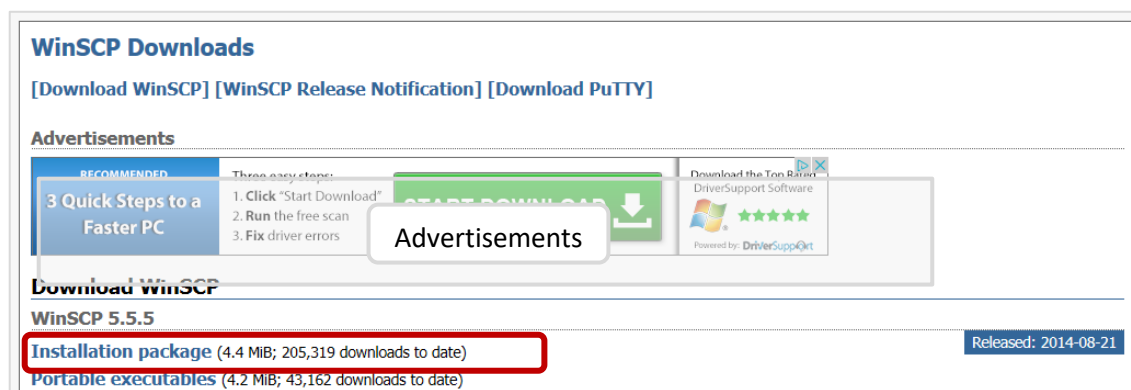
# Access your home filespace (H: drive) off-campus using WinSCP

**WinSCP** is a free FTP client/application for Windows that allows you to transfer files between the hard drive of your personal PC and your H: drive (home filespace) on the University server. It uses a secure connection so your username and password, as well as the files you transfer, remain protected.

Download the current version of WinSCP from <http://winscp.net/eng/download.php>

## Install WinSCP

1. Click on the **Installation package** link:



**WinSCP Downloads**  
[Download WinSCP] [WinSCP Release Notification] [Download PuTTY]

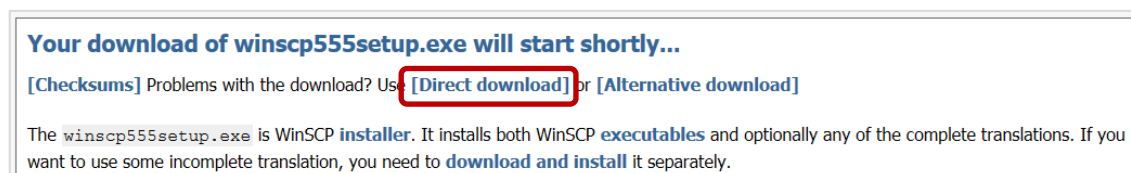
**Advertisements**

RECOMMENDED: 3 Quick Steps to a Faster PC  
Three easy steps:  
1. Click "Start Download"  
2. Run the free scan  
3. Fix driver errors

Download the Top Rated DriverSupport Software  
Powered by: DriverSupport

**Download WinSCP**  
WinSCP 5.5.5  
**Installation package** (4.4 MiB; 205,319 downloads to date) Released: 2014-08-21  
**Portable executables** (4.2 MiB; 43,162 downloads to date)

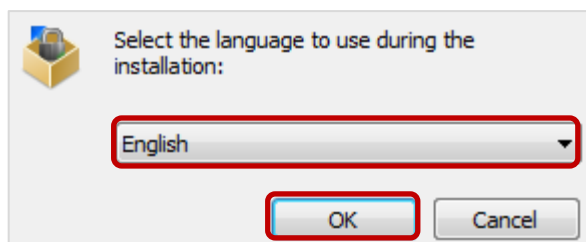
2. On the next page click **Direct download**:



**Your download of winscp555setup.exe will start shortly...**  
[Checksums] Problems with the download? Use [Direct download] or [Alternative download]

The `winscp555setup.exe` is WinSCP **installer**. It installs both WinSCP **executables** and optionally any of the complete translations. If you want to use some incomplete translation, you need to **download and install** it separately.

3. At the prompt, **Save** the **exe** file to your Windows Desktop.
4. Once the download is complete, double-click **winscp555setup.exe** on your Desktop.
  - **Note:** The **.exe** filename above is correct at time of writing. If a newer version of WinSCP is available, you will see a slightly different filename, eg **winscpxxxsetup.exe** where xxx is the version.
5. Select the language you want to use and click **OK**.



6. The WinSCP Setup Wizard opens.
7. Review the *Welcome* and *License Agreement* screens, clicking **Next** to continue.
8. When prompted to select a setup type, choose **Typical installation** and click **Next**.

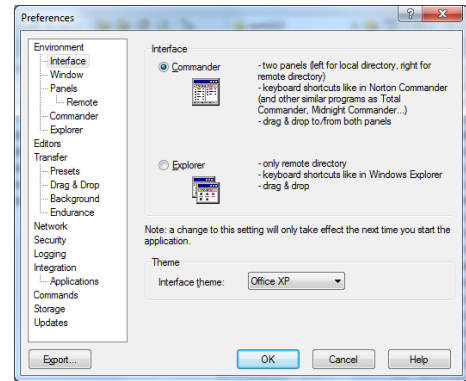
9. You will be prompted to select a *User interface style*.

- A short description of each is provided to help you decide. You can always change the interface style later via WinSCP's preferences.

10. Click **Next**.

- If prompted, choose whether or not you want to include Google Chrome, then click **Next** again.

11. Click **Install** to start the installation. At the end of the installation, tick the *Launch WinSCP* checkbox, and click **Finish**.



## Using WinSCP

The **WinSCP Login** dialog opens.

1. From the drop-down *File protocol* menu, select **SFTP**.

2. Enter the *Host name* **ftp.abdn.ac.uk**

3. Enter your normal computing *User name* and *Password*.

4. Click the **Login** button – it may take a few seconds to make a secure connection.

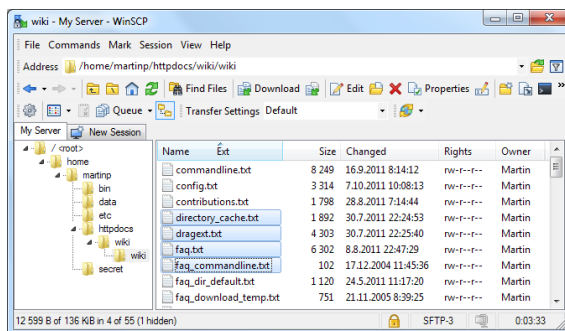
5. Say **Yes** to the warning about the server host key not being found in the cache – you will only be asked this once.

6. The WinSCP interface opens.

- Depending on the choice you made in step 9 above, you will see either:

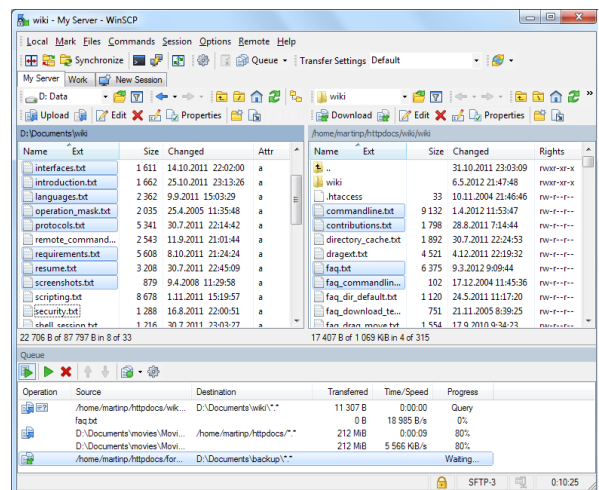
The **Explorer Interface**

or The **Commander Interface**



Files and folders on your H: drive are displayed with a directory tree on the left.

Transfer files by dragging and dropping between WinSCP and Windows Explorer



Files and folders on the hard drive of your personal PC are displayed in the left pane and files and folders on your H: drive in the right pane.

Transfer files by dragging and dropping from one pane to the other.

## Help and Support

See the guides on the WinSCP website: <http://winscp.net/eng/docs/start> or contact the IT Service Desk: [servicedesk@abdn.ac.uk](mailto:servicedesk@abdn.ac.uk) or <https://myit.abdn.ac.uk>