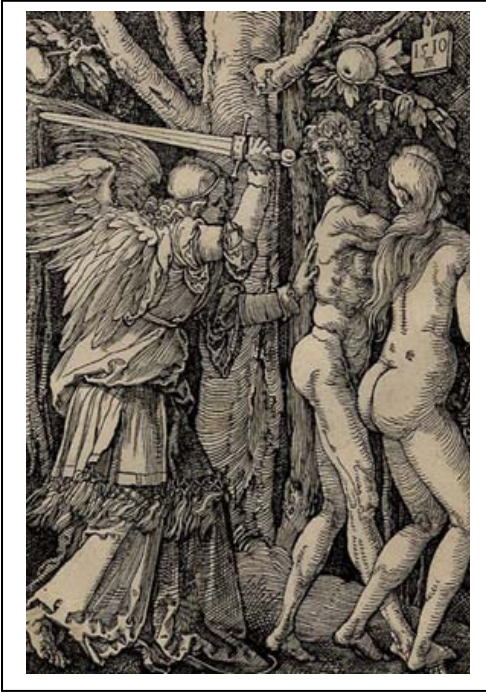


LIMINAL COMMUNITIES LIVING AT THE MARGINS IN EARLY MODERN EUROPE



Centre for Early Modern Studies

Postgraduate Symposium

Friday 20 May 2011, 1 pm- 5.30 pm

Location: Humanity Manse

Lunch from 1 pm

1.30 pm -- Sandra Cardarelli

Acceptance and Rejection:
Sienese, Pisan and Corsican Citizens in late
fifteenth-century Southern Tuscany

2.00 pm -- Chris Langley

A Sense of Sin? Excommunication and Reconciliation in mid-seventeenth
century Scotland

2.30 -3.00 pm Discussion

3.00 pm -- Leslie Drury

The Giant Mother Bunch: Alewives and the Social Topography of London in
Early Modern English Literature

3.30 -- Kirsteen Mackenzie

English perceptions of Scottish Highlanders in the mid-seventeenth century

4.00-4.30 pm Discussion, followed by drinks