



Configuring a wireless connection: Windows Vista – uoa-corporate

Christine Mackenzie, and DIT Documentation Team, August 2007. Last updated August 2009
FS WN02 Vista

Use this Fact Sheet to configure a Vista-based PC or laptop to connect to the wireless service *uoa-corporate*.

UoA-Corporate provides staff with University owned laptops with the same level of access as a wired connection.

Note: This service is provided for special circumstances where the required access is not available through the eduroam service and can only be accessed when on campus. Unless you need to or have been instructed to use *uoa-corporate*, you should use the standard wireless service *eduroam*. See Fact Sheet *FSWN01 Vista – eduroam and resnet* for details.

Before you start

Before you connect to any of our wireless services, we recommend you check the following:

- You must have a University owned laptop in the UoA active directory domain and have administrator rights on that laptop.
- You have a current University of Aberdeen username and password.
- You are running Windows Vista.
- You have built-in wireless capability or have purchased and installed a wireless network adapter. The adapter will need to be able to support WPA encryption. If your adapter is a few years old, you may need to check the manufacturer's website and download more recent drivers for your adapter.
- You have up-to-date anti-virus software, and up-to-date wireless adapter drivers.

Note: When connecting to our wireless services, you are bound by our *Terms & Conditions for using IT Facilities*. These are available on the DIT web site – www.abdn.ac.uk/dit/policy

Trouble connecting to eduroam or ResNet?

1. Check that you have entered the correct username and password.
2. Ensure you follow **all** the instructions on this Fact Sheet.
3. Check that you have set your browser's proxy settings as in section 2.1
4. Make sure that IPv6 is disabled in the wireless adapter's IP configuration.
 - Click on the **Start** button and type **ncpa.cpl** into the **Start Search** text box, then press the **Enter** key. The **Network Connections** dialog opens.
 - Right click on **Wireless Network Connection** and select **Properties** from the pop-up menu. The **Wireless Network Connection Properties** dialog opens.
 - Under the **Networking** tab, untick the **Internet Protocol Version 6 (TCP/IPv6)** checkbox, then click **OK** and close the Network Connections dialog
5. If your laptop still fails to connect, return to the **Protected EAP properties** dialog (see p. 3) and **untick** the **Validate server certificate** checkbox.

Still having trouble? contact the Service Desk – e-mail: servicedesk@abdn.ac.uk, tel: (27)3636. Or see our wireless web pages – www.abdn.ac.uk/wireless/help

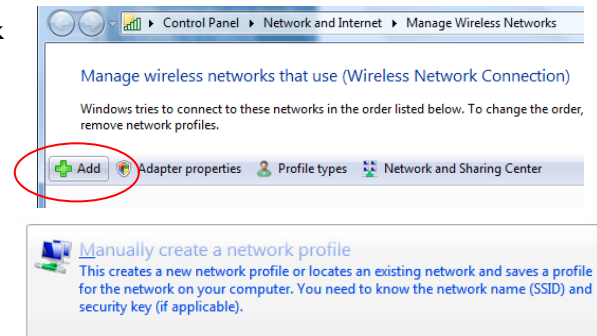
1. Adding *uoa-corporate* wireless network

1.1 Open the Manage Wireless Networks window

- Go to **Start > Control Panel > Network and Internet > Network and Sharing Center**
- From the menu on the left hand side of the **Network and Sharing Center** window, click on the link **Manage wireless networks**

1.2 Manually add a named wireless network

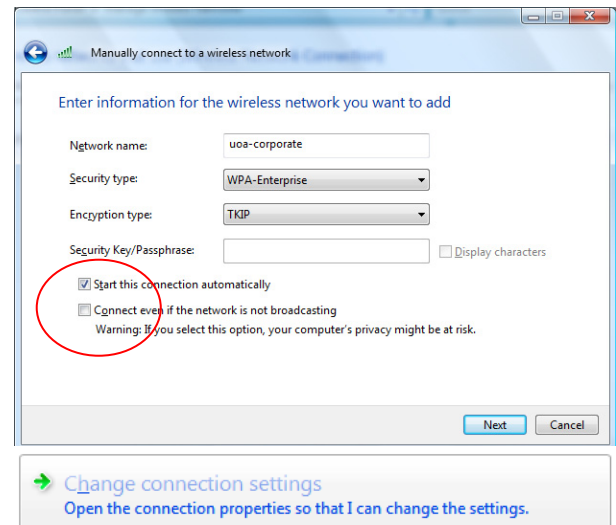
- In the **Manage Wireless Networks** window, click on the **Add** button



- Click on **Manually create a network profile**

The **Manually connect to a wireless network** window opens.

- In the **Network name** text box, type *uoa-corporate*
- For **Security type**, select *WPA-Enterprise* from the drop down option menu
- Ensure **Encryption type** is *TKIP*
- Ensure the **Start this connection automatically** checkbox is *ticked*



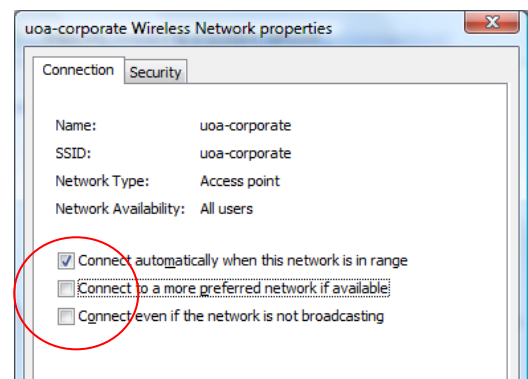
Note: the network name that you type here is case sensitive, and must appear all lower case, exactly as *uoa-corporate*.

- Click on the **Next** button.
- Click on Change connection settings

The **uoa-corporate Wireless Network properties** dialog opens.

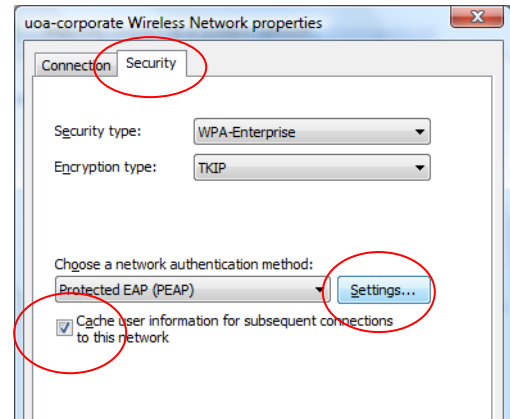
Ensure that

- the **Connect automatically when this network is in range** checkbox is *ticked*
- the **Connect to a more preferred network if available** checkbox is *unticked*
- the **Connect even if the network is not broadcasting** checkbox is *unticked*.
- Click on the **Security** tab at the top of the *uoa-corporate* Wireless Network properties dialog.



Ensure

- the **Security type** is set to *WPA-Enterprise*
- the **Encryption type** is set to *TKIP*
- that *Protected EAP (PEAP)* is selected under the **Choose a network authentication method** options
- the **Cache user information for subsequent connections to this network** checkbox is *ticked*
- Click on the **Settings...** button



The **Protected EAP Properties** dialog opens.

Under **When connecting**, ensure

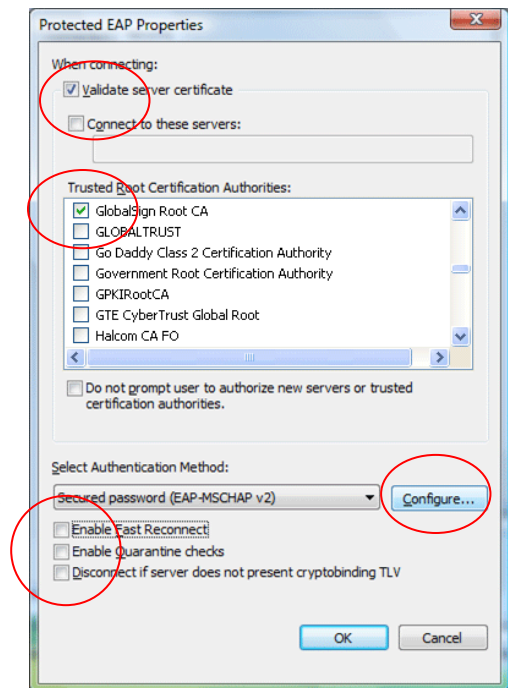
- the **Validate server certificate** checkbox is *ticked*
- the **Connect to these servers** checkbox is *unticked*

Under **Trusted Root Certification Authorities**

- *tick* the checkbox for **GlobalSign Root CA**

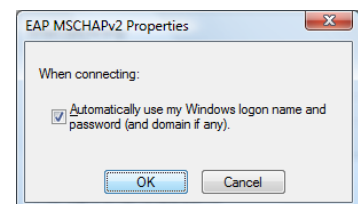
Under **Select Authentication Method**

- ensure *Secured password (EAP-MSCHAP v2)* is *selected*
- *untick* the **Enable Fast Reconnect** checkbox and leave the remaining two checkboxes *unticked*
- Click on the **Configure...** button.



The **EAP MSCHAPv2 Properties** dialog opens.

- *tick* the **Automatically use my Windows logon name and password (and domain if any)** checkbox, if it is not already ticked.
- Click **OK**
- Click **OK** again to return to the **uoa-corporate Wireless network properties** dialog
- Click **OK** to return to the **Manually connect to a wireless network** dialog
- Close any remaining windows



1.1 Finishing off

You have completed the configuration of your wireless connections

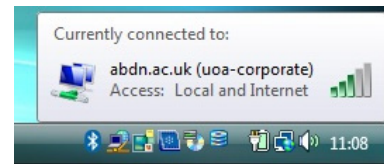
- **Restart your PC or laptop**, logging in with your normal University username and password. You will be connected to *uoa-corporate* automatically.

2. Connecting to the University wireless networks

If you have followed all the steps above, you will be connected automatically to *uoa-corporate* upon restarting your laptop – this may take up to 20 seconds.

- You will stay connected while you remain in range of the wireless network. If you wish to disconnect, or connect to a different network, see section 4 below.

Note: On occasion, the connection to *uoa-corporate* may be unsuccessful. If this happens, contact the Service Desk for advice.



- Now, follow the steps in section 2.1 to set your browser proxy settings.

2.1 Setting your browser proxy settings

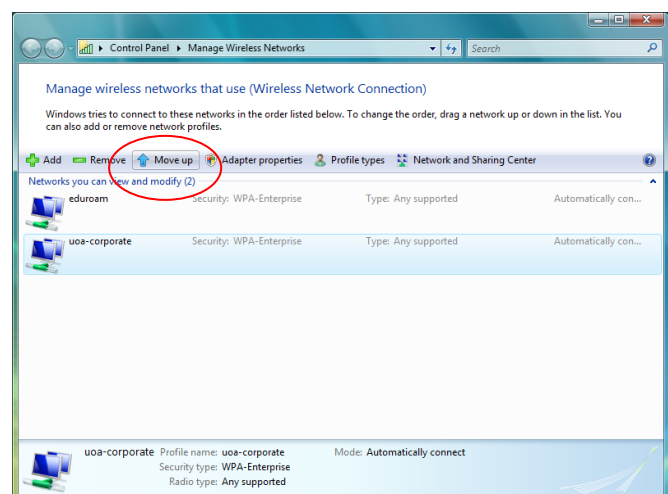
Once you have connected to the wireless service, you will need to set the University proxy before accessing the Web. The following instructions are for Internet Explorer 7; for other browsers, see www.abdn.ac.uk/proxy

- Open Internet Explorer
- Go to *Tools > Internet Options*
- Click on *Connections* tab
- Click on *LAN settings*
- Tick *Automatically detect settings*
- Click *OK* until all windows are closed
- Close Internet Explorer and re-open before browsing the Web

3. Order of preferred networks

If more than one wireless signal is in range, you can choose which one you wish your laptop to connect to automatically. This is useful if you move between locations where both *eduroam* and *resnet* are available.

- Return to the **Network and Sharing Center** window (**Start > Control Panel > Network and Internet > Network and Sharing Center**, then click on the link to **Manage wireless networks**)
- The network at the top of the list is the one that you will be automatically connected to when you are in range.
- To change the order of your list, select a network and use the **Move down** or **Move up** button.
- Close the **Manage Wireless Networks** dialog
- Close the **Network and Sharing Center** dialog



4. To manually disconnect and connect to a wireless network

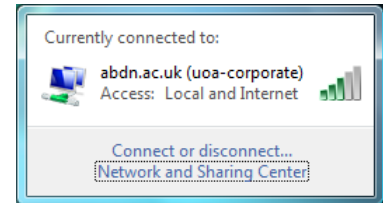
When you want to manually disconnect from or connect to the a wireless network

- click once on the wireless network icon on your status bar



- select **Connect or disconnect...** from the pop-up window

From the resulting window, you can choose to disconnect, connect, or connect to another network.



When you are disconnected from the wireless network, the wireless icon on your status bar will have a cross through it.



Note: Regardless of whether you have disconnected from the wireless network before you shut down your laptop, the next time you restart, it will automatically detect and connect to the wireless network. If you have configured your laptop for more than one wireless network (e.g. eduroam and uoa-corporate) you will be connected to your preferred network as selected by you in section 3 above.